

PRODUCT INFORMATION PACKET



Model No: 056T17D5350

Catalog No: 056T17D5350

Fan and Blower Motor, 3 & 2 HP, 3 Ph, 60 & 50 Hz, 208-230/460 & 190/380-415 V, 1800 & 1500 RPM,
56HZ Frame, DP



Regal and Leeson are trademarks of Regal Rexnord Corporation or one of its affiliated companies.
©2024 Regal Rexnord Corporation, All Rights Reserved. MC017097E



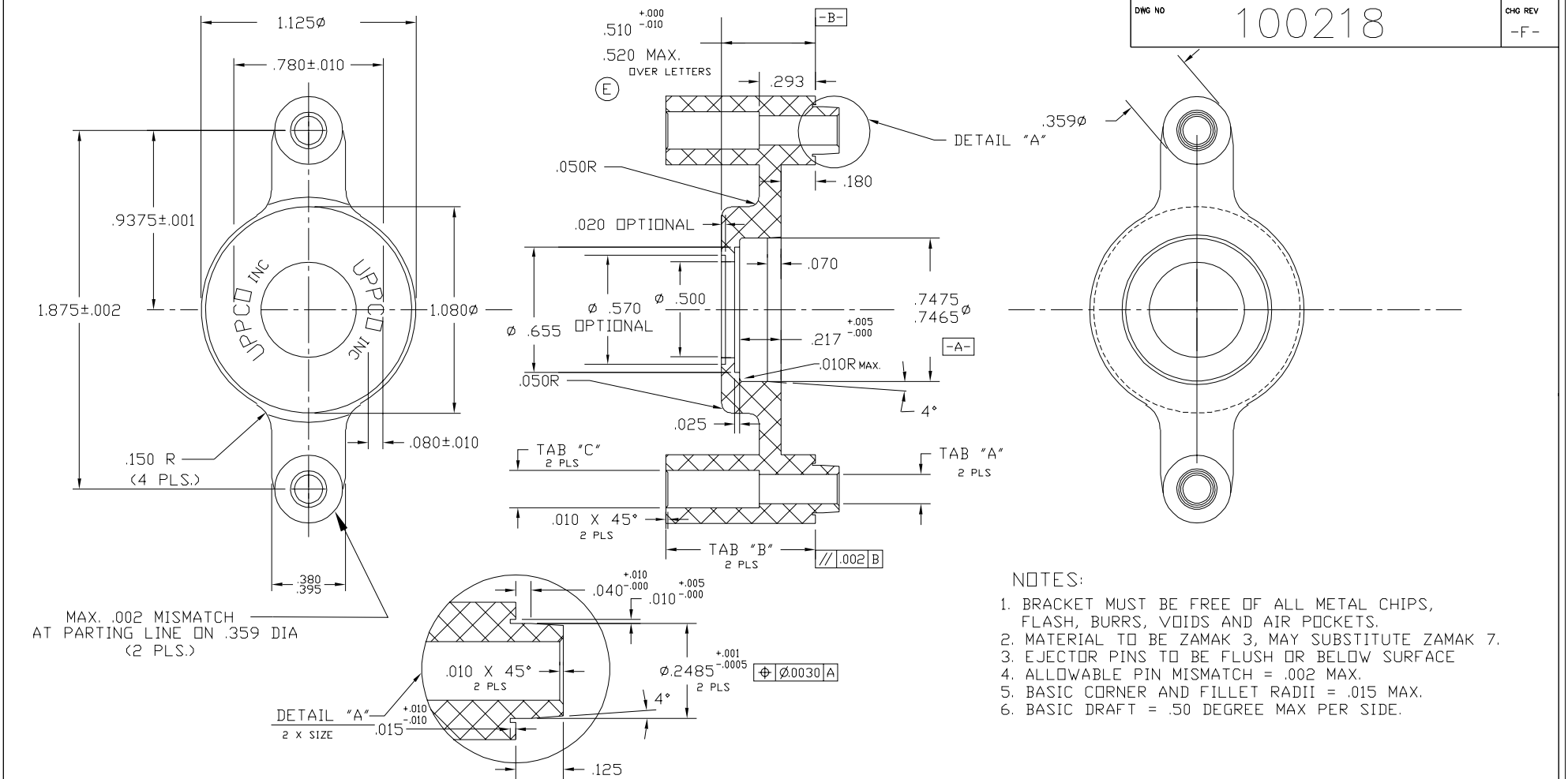


Nameplate Specifications

Phase	3	Output HP	3 & 2 Hp
Output KW	2.2 & 1.5 kW	Voltage	208-230/460 & 190/380-415 V
Speed	1725 & 1425 rpm	Service Factor	1.15 & 1.15
Frame	56HZ	Enclosure	Drip Proof
Thermal Protection	Automatic	Efficiency	84 & 84 %
Ambient Temperature	40 °C	Frequency	60 & 50 Hz
Current	9.2-8.6/4.3 & 7.2/3.6-3.6 A	Power Factor	81
Duty	Continuous	Insulation Class	B
Design Code	B	KVA Code	K
Drive End Bearing Size	6205	Opp Drive End Bearing Size	6205
UL	Recognized	CSA	Y
CE	Y	IP Code	22
Number of Speeds	1		

Technical Specifications

Electrical Type	Squirrel Cage Induction Run	Starting Method	Across The Line
Poles	4	Rotation	Reversible
Resistance Main	0 Ohms	Mounting	Resilient Base
Motor Orientation	Horizontal	Drive End Bearing	Ball
Opp Drive End Bearing	Ball	Frame Material	Rolled Steel
Shaft Type	NEMA 145T	Overall Length	14.72 in
Frame Length	10.06 in	Shaft Diameter	0.625 in
Shaft Extension	2.28 in	Assembly/Box Mounting	F1 ONLY
Outline Drawing	A-100218-1006	Connection Drawing	A-102007-1



DWG NO 100218 CHG REV -F-

NOTES:

1. BRACKET MUST BE FREE OF ALL METAL CHIPS, FLASH, BURRS, VOIDS AND AIR POCKETS.
2. MATERIAL TO BE ZAMAK 3, MAY SUBSTITUTE ZAMAK 7.
3. EJECTOR PINS TO BE FLUSH OR BELOW SURFACE
4. ALLOWABLE PIN MISMATCH = .002 MAX.
5. BASIC CORNER AND FILLET RADII = .015 MAX.
6. BASIC DRAFT = .50 DEGREE MAX PER SIDE.

MAX. .002 MISMATCH AT PARTING LINE ON .359 DIA (2 PLS.)

TAB "A" DIA.	TAB "B" ⁺⁰⁰³ / ₋₀₀₃	TAB "C" DIA
-1	-1 .293	-1 .123
-2 .168-.172	-2 .540	-2
-4 .128-.130	-3 .625	-3 .170
-5 .152-.154	-4 .781	-4 .139
-6 .192-.194		-5 .194 ⁺⁰⁰³ / ₋₀₀₀
		-6 .152/.154

REV	ECN#	REVISION	DATE	BY
-F-	12949	ADDED GEOMETRIC TOL AND REVISED NOTES	12-03-99	TC
-E-	10656	WAS .490 DIM.	02/15/95	JB
-D-	8217		3/25/92	FS

ALL INFORMATION AND DRAWINGS CONTAINED HEREIN ARE THE SOLE CONFIDENTIAL PROPERTY OF UPPCO INCORPORATED. REPRODUCTION OF THIS DOCUMENT IN WHOLE OR IN PART IS FORBIDDEN WITHOUT THE EXPRESS WRITTEN CONSENT OF UPPCO INCORPORATED.

TOLERANCE UNLESS NOTED
 FRACTIONAL DECIMAL ANGLES
 + 1/64 + .005 +
 - 1/64 - .005 -

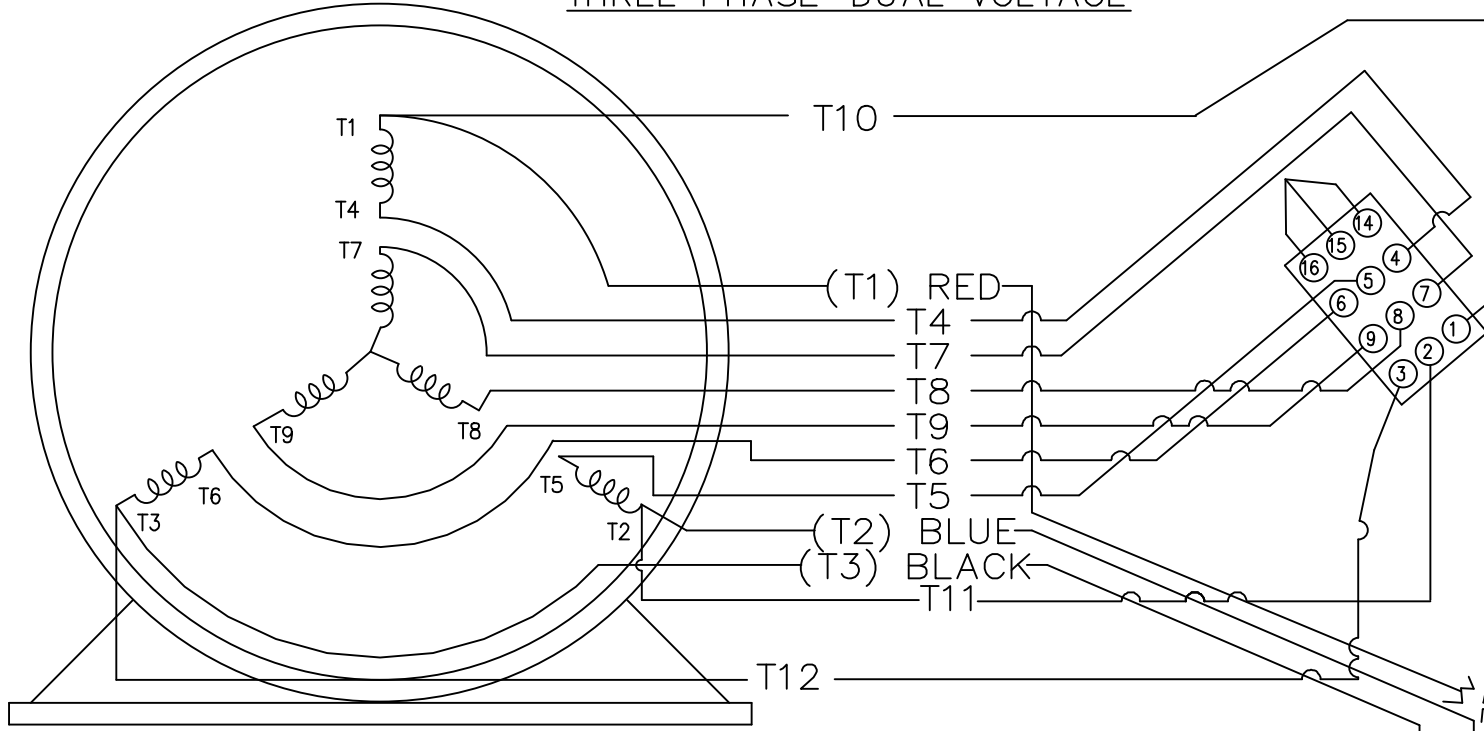
DRAWN BY: JB DATE: 02/15/95
 DWG SCALE: DOUBLE

A. O. SMITH/UPPCO
 302 N. SIXTH ST. MONTICELLO, INDIANA 47960-1839

TITLE: BALL BEARING BRACKET

DWG NO: 100218 TAB A-B-C CHG REV: -F-

THREE PHASE-DUAL VOLTAGE

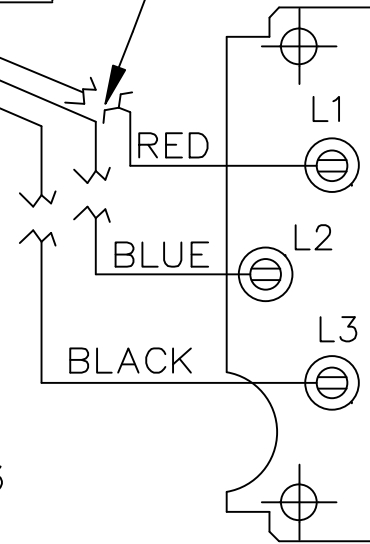


NUMBERS SHOWN ON TERM BOARD ARE FOR REF. ONLY. NUMBERS DO NOT APPEAR ON PARTS.

(VIEWING BOTTOM OF VCD)

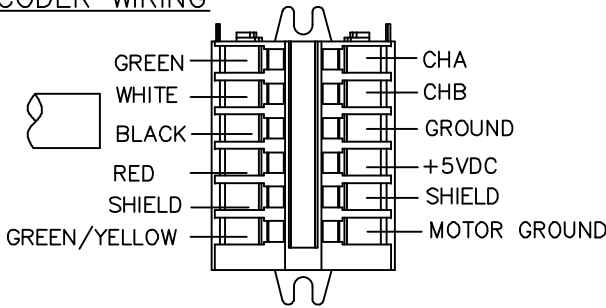
CONNECT RESPECTIVE LEADS USING 79944-3 AND 79944-1 TERMS (3 PLACES)

VIEW OF TERMINAL END

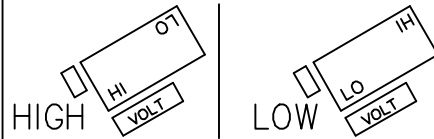


VIEWING BOTTOM OF TERMINAL BOARD

ENCODER WIRING



TO CHANGE VOLTAGE, PULL PLUG, ROTATE 180° AND REINSERT



CONNECT LINES TO L1, L2 & L3

			TOLERANCES UNLESS SPECIFIED		REGAL-BELOIT <i>Motor Technologies Group</i>	DRAWN
			DEC.	INCHES		UD
			.X	± -		AP 04/24/2012
			.XX	± -	TITLE CONNECTION DIAGRAM 3 φ - DUAL VOLTAGE MOTOR	APPD RD 04/24/2012
2	ADDED NOTE FOR CONNECTING TERM BOARD LEADS	AP 08/09/2012	.XXX	± -		SCALE 1=1
1	ADDED ENCODER WIRING & GROUND LEAD	UD 07/12/12	AP .XXXX	± -	MAT'L.	REF 102007-2
NO.	REVISION	BY & DATE	CHK ANG	± -	FINISH	FMF MU107755
THIS DRAWING IN DESIGN AND DETAIL IS OUR PROPERTY AND MUST NOT BE USED EXCEPT IN CONNECTION WITH OUR WORK ALL RIGHTS OF DESIGN AND INVENTION ARE RESERVED THIS IS AN ELECTRONICALLY GENERATED DOCUMENT - DO NOT SCALE THIS PRINT			RFP		CAD FILE 102007-16	SIZE A
			DIST WP			DRAWING NO. 102007-16
						PAGE OF 1
						REV. 1

CERTIFICATION DATA SHEET

Model#: 56T17D5350 E
CONN. DIAGRAM: A-102007-1
OUTLINE: A-100218-1006

WINDING#: ZT400 NONE 3
ASSEMBLY: F1 ONLY

TYPICAL MOTOR PERFORMANCE DATA

HP	KW	SYNC. RPM	F.L. RPM	FRAME	ENCLOSURE	KVA CODE	DESIGN
3&2	2.24&1.49	1800	1725&1425	56HZ	DP	K	B

PH	Hz	VOLTS	FL AMPS	START TYPE	DUTY	INSL	S.F	AMB°C	ELEVATION
3	60/50	208- 230/460#190/ 380-415	9.2- 8.6/4.3&7.2/3. 6-3.6	ACROSS THE LINE	CONTINUOU S	B3	1.15/1.15	40	3300

FULL LOAD EFF: 84&84	3/4 LOAD EFF: 85.5	1/2 LOAD EFF: 85	GTD. EFF	ELEC. TYPE	NO LOAD AMPS
			81.5	SQ CAGE IND RUN	4 / 2

F.L. TORQUE	LOCKED ROTOR AMPS	L.R. TORQUE	B.D. TORQUE	F.L. RISE°C
9.1 LB-FT	62 / 31	25 LB-FT 275	31 LB-FT 341	60

SOUND PRESSURE @ 3 FT.	SOUND POWER	ROTOR WK^2	MAX. WK^2	SAFE STALL TIME	STARTS /HOUR	APPROX. MOTOR WGT
56 dBA	66 dBA	0.14 LB-FT^2	20 LB-FT^2	12 SEC.	2	48 LBS.

***** SUPPLEMENTAL INFORMATION *****

DE BRACKET TYPE	ODE BRACKET TYPE	MOUNT TYPE	ORIENTATION	SEVERE DUTY	HAZARDOUS LOCATION	DRIP COVER	SCREENS	PAINT
STANDARD	STANDARD	RESILIENT BASE	HORIZONTAL	FALSE	NONE	FALSE	NONE	GRAY (POWDER)

BEARINGS		GREASE	SHAFT TYPE	SPECIAL DE	SPECIAL ODE	SHAFT MATERIAL	FRAME MATERIAL
DE	OPE						
BALL	BALL	POLYREX EM	56FR-140T	NONE	NONE	1144 STRESSPROOF (C-223)	ROLLED STEEL
6205	6205						

THERMO-PROTECTORS				THERMISTORS	CONTROL	SPACE /n HEATERS
THERMOSTATS	PROTECTORS	WDG RTDs	BRG RTDs			
NONE	AUTOMATIC	NONE	NONE	NONE	FALSE	NONE VOLTS

If Inverter equals NONE, contact factory for further information

INVERTER TORQUE: NONE
INV. HP SPEED RANGE: NONE
ENCODER: NONE
NONE NONE
NONE NONE PPR
BRAKE: NONE NONE
NONE P/N NONE
NONE NONE
NONE FT-LB NONE V NONE Hz

*
N
O
T
E
S
*

DATE: 06/28/2017 06:43:05 AM
 FORM 3531 REV.3 02/07/99

** Subject to change without notice.



MARATHON ELECTRIC CORPORATION
TYPICAL PERFORMANCE CURVE for AC MOTOR

Customer

Curve at

460

Volts

HP 3&2

PHASE 3

Model No 56T17D5350

60

HZ

VOLTS 208-230/460&190/380-415

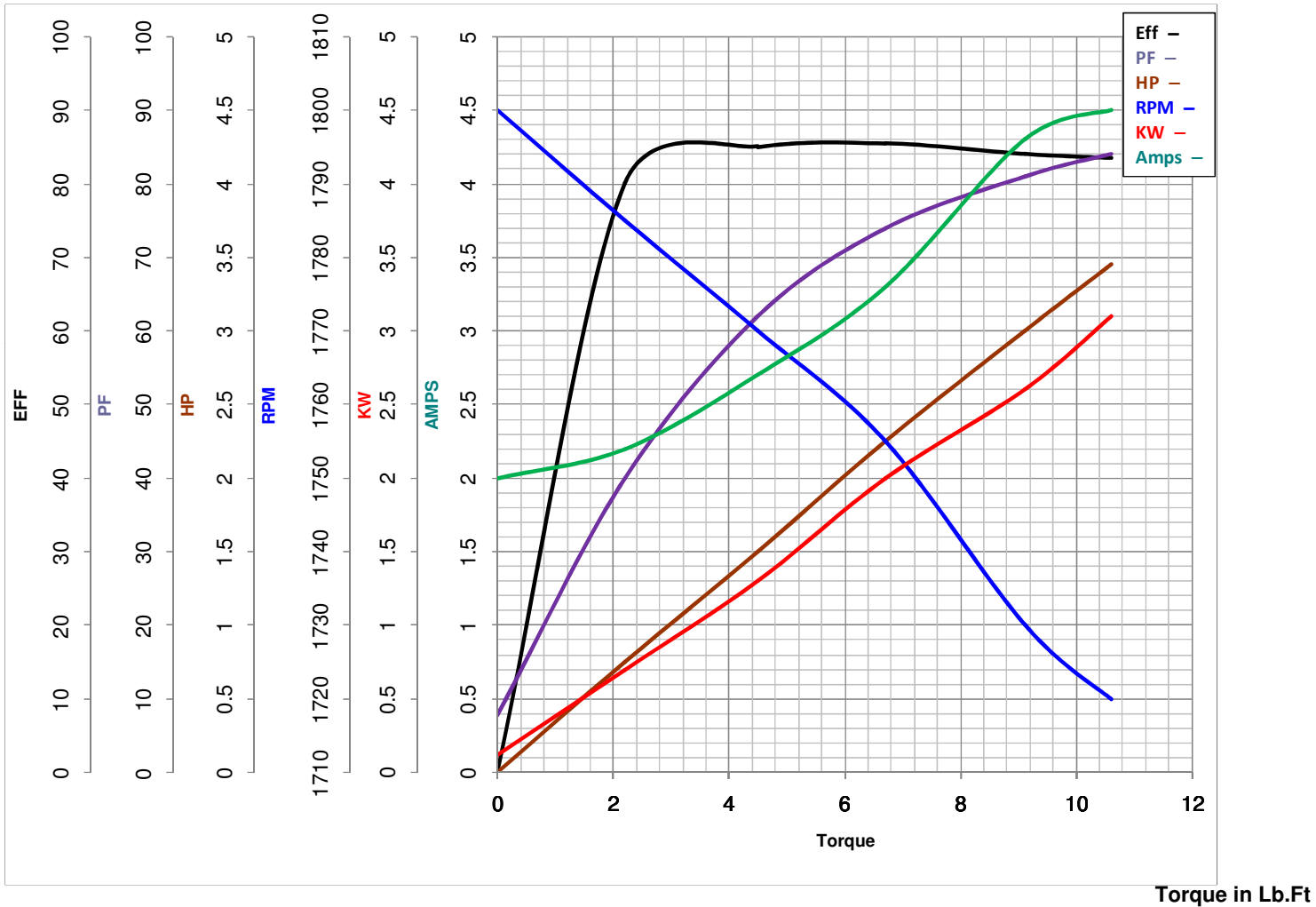
3

HP

Catalog No G145

HZ 60&50

RPM 1725&1425



FL TORQUE	<u>9.1</u>	Lb.Ft	FL AMPS	<u>9.2-8.6/4.3</u>
BD TORQUE	<u>31.0</u>	Lb.Ft	PU TORQUE	<u>26.0</u>
LR TORQUE	<u>25</u>	Lb.Ft	LR AMPS	<u>31</u>
WINDING	ZT400-		Date	1/23/2019

EC Declaration of Conformity

The undersigned representing
the manufacturer:

Regal Beloit America
100 East Randolph St.
Wausau, WI 54401

and the authorized representative
established within the Community:

Marathon Electric UK
6F Thistleton Road Ind. Estate
Market Overton
Oakham, Rutland LE15 7PP UK

are committed to providing customers with products that comply with applicable regulations and international protocols to which they are subject, including the requirements of the European Parliament Directive on the Harmonization of the laws relating to electrical equipment designed for use within certain voltage limits (2014/35/EU).

Regal Beloit America declares that the following product(s), to which this declaration relates, are in conformity with the relevant sections of the EC standards listed below.

This statement supersedes any statements previously issued pertaining to the product(s) listed below and is subject to change without notice.

Model No : 056T17D5350

(Model No. may contain prefix and/or suffix characters)

Catalog No : G145

Rework No : N/A

Directives :

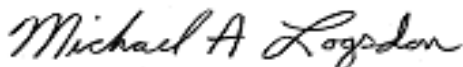
Low Voltage Directive 2014/35/EU

Harmonized Standards Used :

EN 60034-1: 2010 (IEC 60034-1: 2010)

EN 60034-5: 2001/A1:2007 (IEC 60034-5: 2000/A1:2006)

Authorized Representative:



Michael A. Logsdon
Vice President, Technology

Authorized Representative in the Community:



Julian Clark
Marketing Engineer

Created on 09/01/2022

CE 22